

# RESIDENTIAL FLAT BUILDING

## 18-20 IRVING STREET PARRAMATTA

### LANDSCAPE ARCHITECTURAL DRAWINGS

#### PLANT LIST

SOCIAL HOUSING DEVELOPMENT, PARRAMATTA						
Code	Botanic Name	Common Name	Size	Pot Size	Rate	Quantity
TREES						
Er	Elaeocarpus reticulatus	Blueberry Ash	6x4m	75L	N/A	9
Ep	Eucalyptus punctata	Grey Gum	12x8m	25L	N/A	2
Li	Lagerstroemia indica	Crape Myrtle	6X6m	25L	N/A	4
MI	Melaleuca lineariifolia	Snow in Summer	4x5m	25L	N/A	1
TI	Tristaniopsis laurina 'Luscious'	Water Gum	8x5m	75L	N/A	5
SHRUBS						
Bs	Banksia spinulosa	Hairpin Banksia	1.5x1m	200mm	1000mm	6
Bmj	Buxus microphylla	Japanese Box	Trim to 0.5x0.5m	200mm	500mm	27
CI	Callistemon linearifolius	Bottlebrush	2.5x1m	200mm	1000mm	33
De	Doryanthes excesior	Gynea lily	1.5x1.5m	200mm	1000mm	17
Ga	Gardenia augusta	Gardenia	1x1m	200mm	500mm	26
Mp	Murraya paniculata	Orange jasmine	1x1.2m	200mm	1000mm	5
Pg	Photinia glabra 'Red Robin'	Photinia	0.3x1m	200mm	1000mm	21
Sr	Strelitzia reginae	Bird of Paradise	1x1m	200mm	1000mm	44
Sp	Syzigium Pinnacle	Pinnacle	7x1.2m	200mm	1000mm	10
Ss	Syzygium smithii	Lilly Pilly	1x1.2m	200mm	1000mm	31
Rop	Rhaphiolepis 'Oriental Pearl'	Oriental Pearl	0.6x1m	200mm	750mm	6
Wfs	Westringia fruticosa Spp.	Westringia	2x2m	200mm	750mm	26
GROUNDCOVER						
DI	Dianella longifolia	Dianella	0.8x0.5m	150mm	6 per /m2	44
Dr	Dichondra repens	Kidney Weed	0.2x1m	150mm	6 per /m2	58
Hv	Hardenbergia violacea	Happy Wanderer	0.3x2m	150mm	6 per /m2	81
UR	Liriope 'Just Right'	Just right	0.45x0.4m	150mm	6 per /m2	119
Lf	Lomandra filiformis	Mat Rush	0.3x0.3m	150mm	6 per /m2	134
LK	Lomandra 'Katrinus'	Lomandra	1x1m	150mm	6per /m2	134
LS	Lomandra Shara	Shara	0.5x0.5m	150mm	6 per /m2	117
NdB	Nandina domestica 'Blush'	Sacred Bamboo	0.6x0.6m	150mm	6 per /m2	44
PX	Philodendron 'Xanadu'	Xanadu	0.7x0.7m	150mm	6 per /m2	51
Tj	Trachelospermum Jasminoides	Star Jasmine	1.2x1m	150mm	6 per /m2	63
Vh	Viola hederacea	Native Violet	Groundcover	150mm	6 per /m2	58
CLIMBERS						
Fp	Ficus pumila	Creeping fig	3x2m	150mm	500mm	11



#### GENERAL NOTES

- THIS DRAWING TO BE READ IN CONJUNCTION WITH LANDSCAPE WORKS SPECIFICATION
- DIMENSIONS ARE IN MILLIMETRES LEVELS SHOWN ARE IN METRES DO NOT SCALE ANY DRAWINGS
- FOR ROAD DETAILS REFER TO CIVIL ENGINEERS DRAWINGS
- FOR BUILDING DETAILS REFER TO ARCHITECTURAL DRAWINGS
- FOR STORMWATER DRAINAGE REFER TO HYDRAULIC ENGINEERS DRAWINGS
- FOR LIGHTING REFER TO ELECTRICAL ENGINEERS DRAWINGS
- ALL SERVICES ARE TO BE CHECKED & VERIFIED ON SITE
- REFER TO SURVEY PLANS BY OPUS INTERNATIONAL CONSULTANS(AUSTRALIA) PTY LTD DATED 1ST APRIL 2015 NOT ALL SURVEY INFORMATION HAS BEEN SHOWN FOR CLARITY OF DRAWING SOME DISCREPANCIES MAY OCCUR

copyright of dem (aust) pty limited abn 92 085 486 844. any unauthorised use or distribution of information depicted on this document without dem (aust) pty limited prior consent is prohibited.

any reports, drawings, advice or information included or referenced that is prepared and/or provided by any other party, including the client/principal, is the sole representation of the party who prepared the report/drawings, advice or information and does not constitute a representation by dem (aust) pty limited. dem (aust) pty limited expressly takes no responsibility for any documents, advice or other material prepared by any other party.

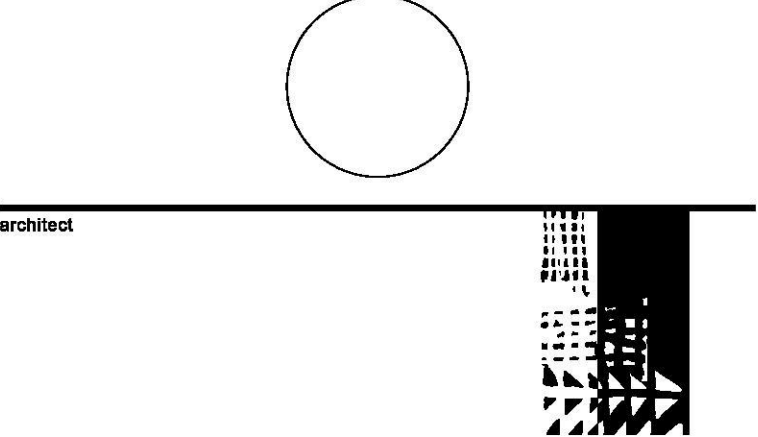
All miscellaneous items such as stairs, ramps, bollards, benches, seats, handrails, balustrades, water features, playground equipment, fences and the like that are indicated on the drawings, are indicated as design intent only. Refer Structural Engineer's documents for detailed engineering requirements related to all supports /structural aspects of these elements. Where specific support / structural information is not shown in the design documents the Contractor shall allow to provide all necessary structural supports / footings as required to ensure installations are structurally sound and adequate to suit the installation. The Contractor shall be responsible for providing all necessary structural engineering inputs & certifications necessary to satisfy this requirement.

figured dimensions to be taken in preference to scaled dimensions. verify all dimensions on the job before preparing shop drawings or commencing work. dimensions shown are computer generated and the contractor is to apply standard building tolerances.

verified suitable for the use stipulated by the relevant revision/issue only if initialed and checked by an authorised dem (aust) pty limited representative.

amendments					verified	
no.	date	amendment	by	chk'd	init	chk'd
A01	2008/18	PRELIMINARY	JB		AB	
A02	30/08/18	FINAL COORDINATION	JB	JB	AB	AB
A03	31/08/18	DRAFT DA	JB	JB	AB	AB
A04	14/08/18	DA ISSUE	JB	JB	AB	AB
A05	30/04/19	REVISED DA ISSUE	AB	AB	AB	AB

north point



planning, urban design, architecture, landscape architecture, interior design

p: po box 5036 west chatswood nsw 1515  
t: (02) 8966 6000  
w: www.dem.com.au

project/client  
**residential flat building**  
**Lot1 D.P.830369, & Lot 30 D.P.2633,**  
**18-20 irving street, parramatta**

NSW GOVERNMENT | Family & Community Services  
Land & Housing Corporation

NSW LAND & HOUSING CORPORATION  
13/31-39 Macquarie Street, Parramatta, NSW 2150

civil engineer

C & M CONSULTING ENGINEERS  
services engineer

BSE BUILDING SERVICES ENGINEERS  
structural engineer

TAYLOR LAUDER BERSTEN PTY. LTD.  
CONSULTING STRUCTURAL, CIVIL & MARITIME ENGINEERS  
drawing title

landscape title sheet

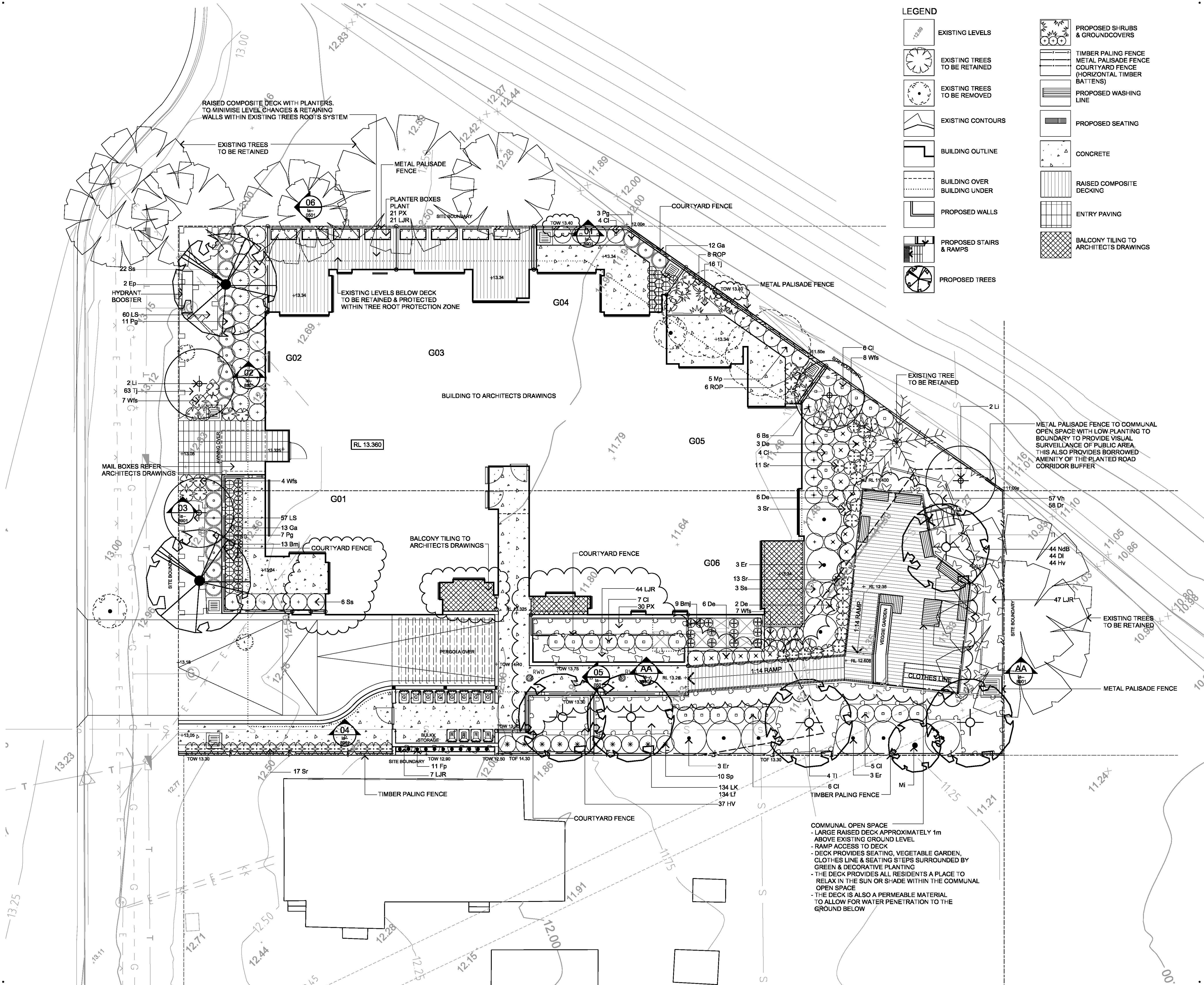
da issue

original	scale	drawn	project no.
a1	1:100	JB	4477-01
drawing no.			rev no.

la--cv00

A05





copyright of dem (aust) Pty limited abn 92 085 486 844.  
any unauthorised use or distribution of information depicted on this document without dem (aust) Pty limited prior consent is prohibited.

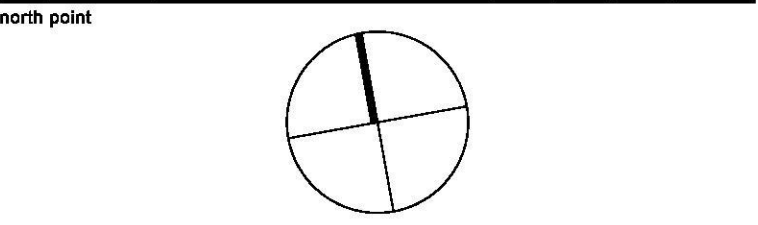
any reports, drawings, advice or information included or referenced that is prepared and/or provided by any other party, including the client/principal, is the sole representation of the party who prepared the report/drawings, advice or information and does not constitute a representation by dem (aust) Pty limited. dem (aust) Pty limited expressly takes no responsibility for any documents, advice or other material prepared by any other party.

All miscellaneous items such as stairs, ramps, bollards, benches, seats, handrails, balustrades, water features, playground equipment, fences and the like that are indicated on the drawings, are indicated as design intent only. Refer Structural Engineer's documents for detailed engineering requirements related to all supports / structural aspects of these elements. Where specific support / structural information is not shown in the design documents the Contractor shall allow to provide all necessary structural supports / footings as required to ensure installations are structurally sound and adequate to suit the installation. The Contractor shall be responsible for providing all necessary structural engineering inputs & certifications necessary to satisfy this requirement.

figured dimensions to be taken in preference to scaled dimensions. verify all dimensions on the job before preparing shop drawings or commencing work. dimensions shown are computer generated and the contractor is to apply standard building tolerances.

verified suitable for the use stipulated by the relevant revision/issue only if initiated and checked by an authorised dem (aust) Pty limited representative.

amendments				verified		
no.	date	amendment	by	chk'd	init	chk'd
A01	20/08/18	PRELIMINARY	JB			
A02	30/08/18	FINAL COORDINATION	JB	JB	AB	AB
A03	31/08/18	DRAFT DA	JB	JB	AB	AB
A04	14/09/18	DA ISSUE	JB	JB	AB	AB
A05	30/04/19	REVISED DA ISSUE	AB	AB	AB	AB
A06	16/05/19	REVISED DA ISSUE	AB	AB	AB	AB



planning, urban design, architecture,  
landscape architecture, interior design

dem

p: po box 5036 west chatswood nsw 1515  
t: (02) 8966 6000  
w: www.dem.com.au

project client  
**residential flat building**  
**Lot1 D.P.830369, & Lot 30 D.P.2633,**  
**18-20 Irving Street, Parramatta**

NSW Family & Community Services  
Land & Housing Corporation

NSW LAND & HOUSING CORPORATION  
13/31-39 Macquarie Street, Parramatta, NSW 2150

civil engineer

C&M CONSULTING ENGINEERS  
C & M CONSULTING ENGINEERS

BSE BUILDING SERVICES ENGINEERS  
BSE BUILDING SERVICES ENGINEERS

tlb  
A Tonkin Company  
TAYLOR LAUDER BERSTEN PTY. LTD.  
CONSULTING STRUCTURAL, CIVIL & MARITIME ENGINEERS

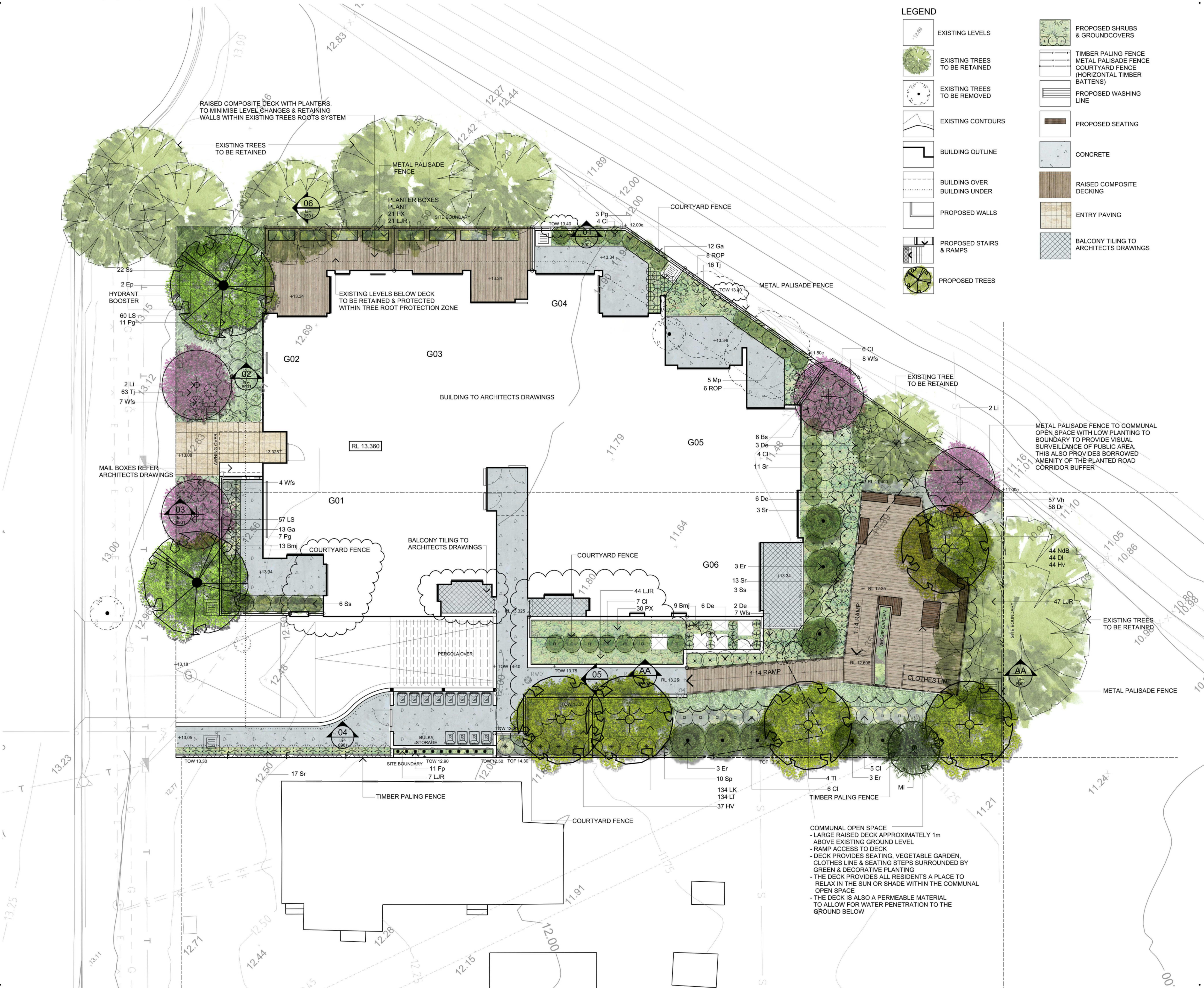
drawing title  
**landscape plan**

da issue

original	scale	drawn	project no.
a1	1:100	JB	4477-01
drawing no.			rev no.

la-0501 A06





LEGEND

	EXISTING LEVELS		PROPOSED SHRUBS & GROUNDCOVERS
	EXISTING TREES TO BE RETAINED		TIMBER PALING FENCE
	EXISTING TREES TO BE REMOVED		METAL PALISADE FENCE
	EXISTING CONTOURS		COURTYARD FENCE
	BUILDING OUTLINE		HORIZONTAL TIMBER BATTENS
	BUILDING OVER BUILDING UNDER		PROPOSED WASHING LINE
	PROPOSED WALLS		PROPOSED SEATING
	PROPOSED STAIRS & RAMPS		CONCRETE
	PROPOSED TREES		RAISED COMPOSITE DECKING
			ENTRY PAVING
			BALCONY TILING TO ARCHITECTS DRAWINGS

copyright of dem (aust) pty limited abn 92 085 486 844. any unauthorised use or distribution of information depicted on this document without dem (aust) pty limited prior consent is prohibited.

any reports, drawings, advice or information included or referenced that is prepared and/or provided by any other party, including the client/principal, is the sole representation of the party who prepared the report/drawings, advice or information and does not constitute a representation by dem (aust) pty limited. dem (aust) pty limited expressly takes no responsibility for any documents, advice or other material prepared by any other party.

All miscellaneous items such as stairs, ramps, bollards, benches, seats, handrails, balustrades, water features, playground equipment, fences and the like that are indicated on the drawings, are indicated as design intent only. Refer Structural Engineer's documents for detailed engineering requirements related to all supports / structural aspects of these elements. Where specific support / structural information is not shown in the design documents the Contractor shall allow to provide all necessary structural supports / footings as required to ensure installations are structurally sound and adequate to suit the installation. The Contractor shall be responsible for providing all necessary structural engineering inputs & certifications necessary to satisfy this requirement.

figured dimensions to be taken in preference to scaled dimensions. verify all dimensions on the job before preparing shop drawings or commencing work. dimensions shown are computer generated and the contractor is to apply standard building tolerances.

verified suitable for the use stipulated by the relevant revision/issue only if initiated and checked by an authorised dem (aust) pty limited representative.

amendments	no.	date	amendment	by	chk'd	init	chk'd
A01	20/08/18	PRELIMINARY		JB	AB		
A02	30/08/18	FINAL COORDINATION		JB	AB		AB
A03	31/08/18	DRAFT DA		JB	AB		AB
A04	14/09/18	DA ISSUE		JB	AB		AB
A05	30/04/19	REVISED DA ISSUE		AB	AB		AB
A06	16/05/19	REVISED DA ISSUE		AB	AB		AB

north point

architect

planning, urban design, architecture, landscape architecture, interior design

p: po box 5036 west chatswood nsw 1515  
t: (02) 8966 6000  
w: www.dem.com.au

residential flat building  
Lot1 D.P.830369, & Lot 30 D.P.2633,  
18-20 irving street, parramatta

Family & Community Services  
Land & Housing Corporation

NSW LAND & HOUSING CORPORATION  
L3/31-39 Macquarie Street, Parramatta, NSW 2150

civil engineer

C & M CONSULTING ENGINEERS

BSE BUILDING SERVICES ENGINEERS

TAYLOR LAUDER BERSTEN PTY. LTD.  
CONSULTING STRUCTURAL, CIVIL & MARITIME ENGINEERS

landscape plan

da issue

original	scale	drawn	project no.
a1	1:100	JB	4477-01
drawing no.			rev no.





amendments					verified	
no.	date	amendment	by	chk'd	init	chk'd
A01	20/08/18	PRELIMINARY	JB		AB	
A02	30/08/18	FINAL COORDINATION	JB	JB	AB	AB
A03	31/08/18	DRAFT DA	JB	JB	AB	AB
A04	14/09/18	DA ISSUE	JB	JB	AB	AB

north point



civil engineer



**la--8901** A04